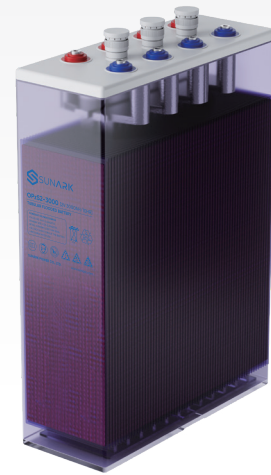


OPzS2-3000

2V 3000AH

Flooded Tubular Deep Cycle Valve Regulated Lead Acid Battery

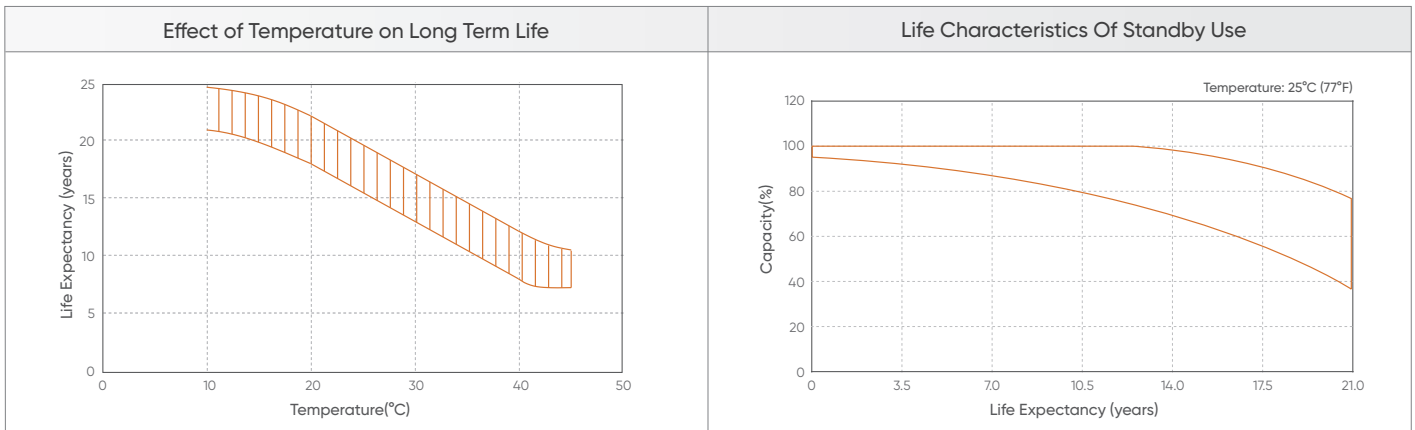
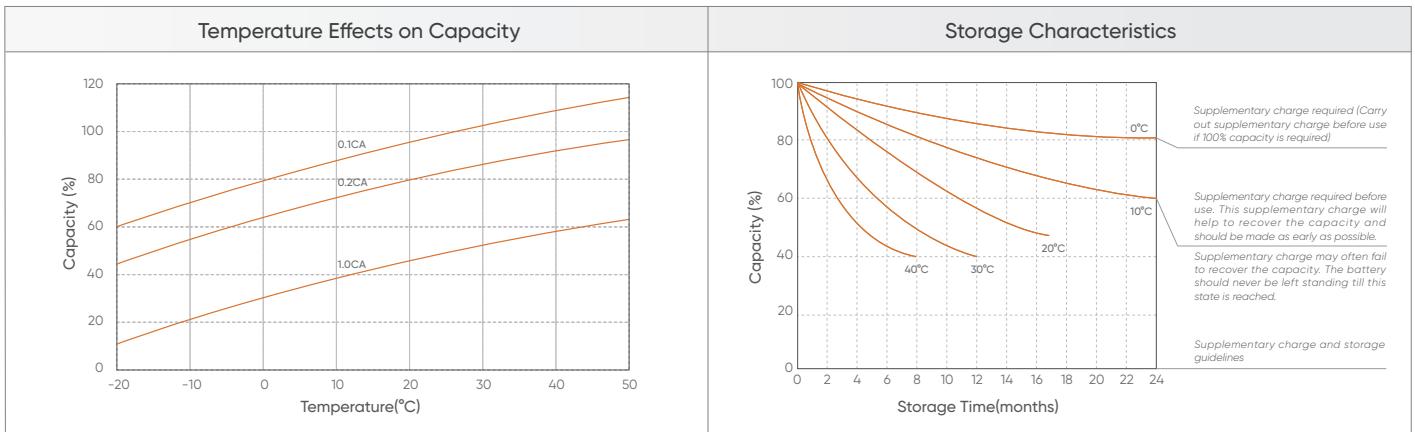
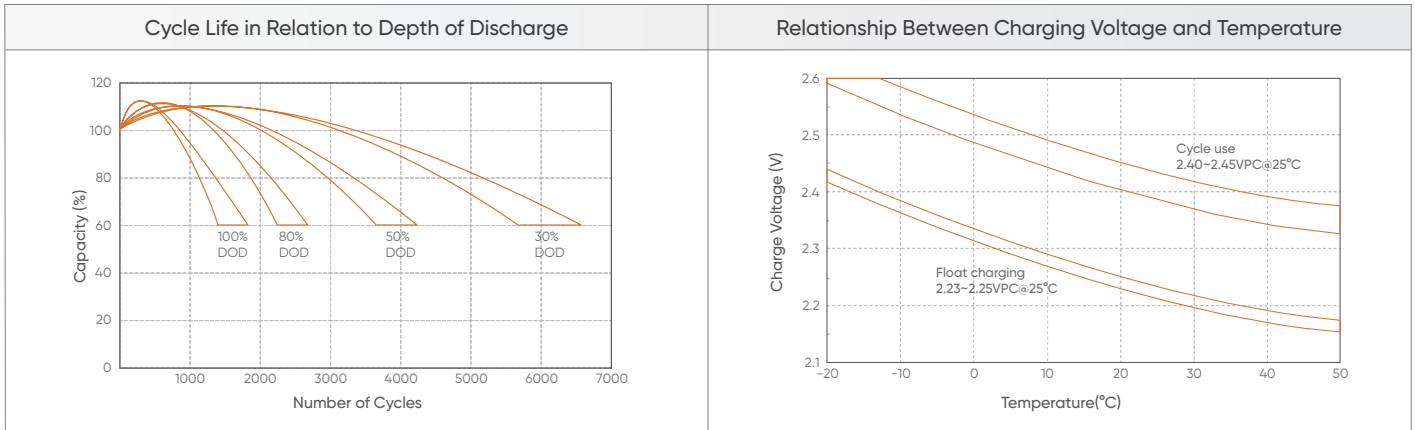
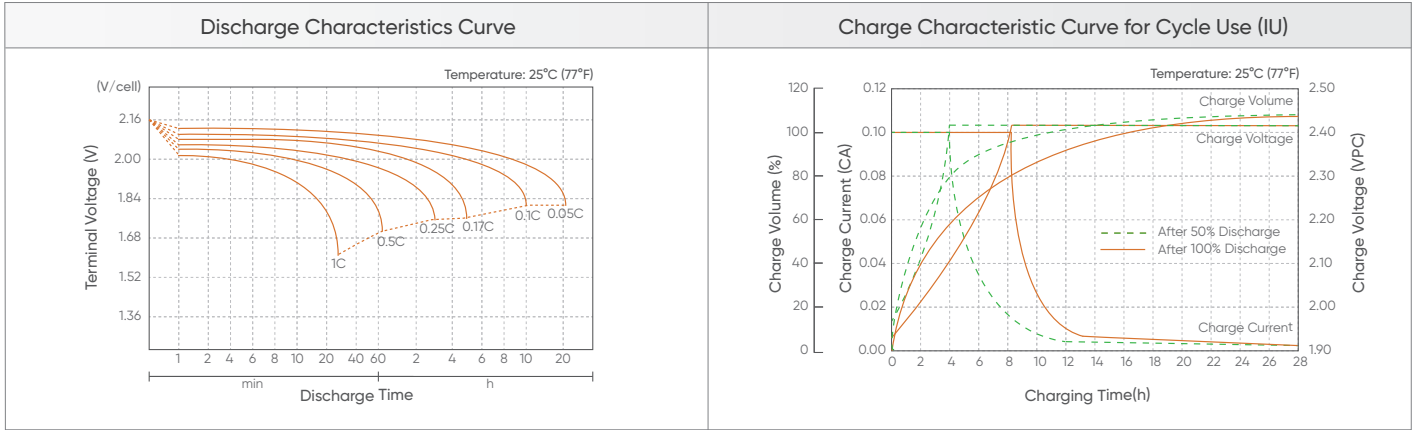
OPzS series is flooded Lead Acid battery that adopts Tubular Plate technology to offer high reliability and performance. The Battery is designed and manufactured according to standards of DIN40736-2/IEC60896-11 with positive spine and patent formula of die-casting active material. OPzS series exceeds standard values with more than 20 years floating design life at 25°C and is suitable for cyclic use(solar/wind energy storage system, traction etc) under extreme operating conditions.



Specification		Dimensions
Cells Per Unit	1	<p>Unit: mm</p> <p>F10 Terminal Torque Value: 10-12 N*m</p> <p>Length 576±1mm (22.7 inches)</p> <p>Width 212±1mm (8.35 inches)</p> <p>Height 770±1mm (30.3 inches)</p> <p>Total Height 827±1mm (32.6 inches)</p>
Voltage Per Unit	2	
Capacity	3000Ah@10hr-rate to 1.85V per cell @25°C	
Weight	Approx. 226.8Kg/166.7Kg (with/without electrolyte)	
Internal Resistance	Approx. 0.11 mΩ	
Terminal	F10(M8)	
Max. Discharge Current	10000A (5 sec)	
Design Life	20 years (floating charge)	
Maximum Charging Current	300.0 A	
Reference Capacity	C24 3591.0AH C48 3957.5AH C72 3997.0AH C100 4250.6AH C120 4335.6AH C240 4408.2AH	
Float Charging Voltage	2.23V~2.25V @25°C Temperature Compensation: -3mV/°C/Cell	
Cycle Use Voltage	2.40V~2.45V @25°C Temperature Compensation: -4mV/°C/Cell	
Operating Temperature Range	Discharge: -15°C~50°C Charge: 0°C~40°C Storage: -15°C~50°C	
Normal Operating Temperature Range	25°C ± 5°C	
Self Discharge	Monthly Self-discharge ratio is less than 3.5% at 25°C. Please charge batteries before using.	
Container Material	A.B.S. UL94-HB, UL94-V0 Optional	

Constant Current Discharge Characteristics: A (25°C)										
F.V/Time	30MIN	1HR	2HR	3HR	4HR	5HR	6HR	8HR	10HR	20HR
1.90V	1596	1265	892.2	680.1	538.7	478.8	419.0	326.9	280.4	161.2
1.87V	1784	1395	957.1	724.0	568.6	506.4	444.2	342.2	293.0	168.4
1.83V	2044	1557	1038	774.4	598.5	529.2	459.9	357.5	305.6	175.7
1.80V	2271	1687	1077	797.2	610.5	541.5	472.5	366.7	315.0	181.1
1.75V	2531	1807	1126	822.7	620.6	551.2	482.0	372.8	321.3	184.7
1.70V	2790	1866	1158	842.2	631.4	559.8	488.3	375.8	324.5	186.6
1.65V	2878	1982	1197	863.1	640.4	567.5	494.6	378.9	327.6	188.4
1.60V	3001	2051	1243	892.1	658.4	579.6	500.9	381.9	330.8	190.2

Constant Power Discharge Characteristics : WPC (25°C)										
F.V/Time	30MIN	1HR	2HR	3HR	4HR	5HR	6HR	8HR	10HR	20HR
1.90V	3055	2429	1725	1322	1054	941.1	828.5	653.9	571.4	328.5
1.87V	3362	2638	1829	1398	1111	993.4	875.7	681.4	595.8	342.6
1.83V	3766	2876	1947	1478	1165	1035	904.1	705.8	617.2	354.9
1.80V	4115	3068	2012	1517	1187	1057	926.1	721.1	632.5	363.7
1.75V	4464	3205	2077	1553	1203	1072	941.9	730.3	641.7	368.9
1.70V	4787	3238	2129	1585	1222	1087	951.3	736.4	647.8	372.4
1.65V	4868	3381	2188	1618	1238	1099	960.8	742.5	650.8	374.2
1.60V	4927	3486	2240	1658	1269	1119	967.1	745.5	653.9	375.9



(Note) All above information shall be changed without prior notice, SunArk reserves the right to explain and update the latest information.